



PETROLEUM 10

2" x 2" Self Priming Pump

Petroleum 10 self-priming centrifugal pumps are capable of creating vacuum sufficient to lift liquids from heights up to 25 feet (8 m) above the source.

A Petroleum 10 PumPAK® is a fully assembled and run tested pump end that can be easily coupled to a number of drivers such as hydraulic motors, 182TC and 184TC frame motors and gas engines. A bearing pedestal is also available for T-frame motor or belt drive.

Standard features include SS drive sleeve, SS fasteners, renewable wear plate, and a semi-open dynamically balanced impeller.

The Petroleum 10 Pump is available in three distinct models: PE, PG and PO:

Model PE Pumps - Compatible For Ethanol & E 85

Model PG Pumps - Compatible For Gasoline, Kerosene, Avgas & Jet Fuel

Model PO Pumps - Compatible For BioDiesel, Fuel Oil & Diesel

SPECIFICATIONS:

Suction / Discharge	2" x 2" NPT
Materials of Construction	Cast iron, Ductile iron
Flow	Up to 225 GPM (51 m ³ /h)
Head Feet	Up to 145' (44 m)
Impeller	PE 10 - semi-open cast iron, 316 SS (optional) PG 10 - semi-open cast iron, aluminum (optional) PO 10 - semi-open cast iron
Motor	Up to 7.5 HP (5.6 kW)
Drive Options	Close coupled 182TC and 184TC Engine mount 5.5 HP (4.1 kW) Engine mount 11 HP (8.2 kW) Engine mount 13 HP (9.7 kW) Hydraulic motor .73 cu. in. (12 cm ³) Pedestal PumPAK® (without motor)
Seal	PE 10 - carbon/ silicon carbide/ Viton PG 10 - carbon / silicon carbide / Viton PO 10 - carbon / Ni-Resist / Viton
Mounting Options	PE 10 - explosion proof, class 1, group D PG 10 - explosion proof, class 1, group D
46 Cfr Compliant	Engine mount 6.5 HP (4.85 kW)
Compatible For	PE 10 - ethanol, E 85 PG 10 - gasoline, avgas, kerosene, jet A/8 PO 10 - biodiesel, fuel oil, diesel

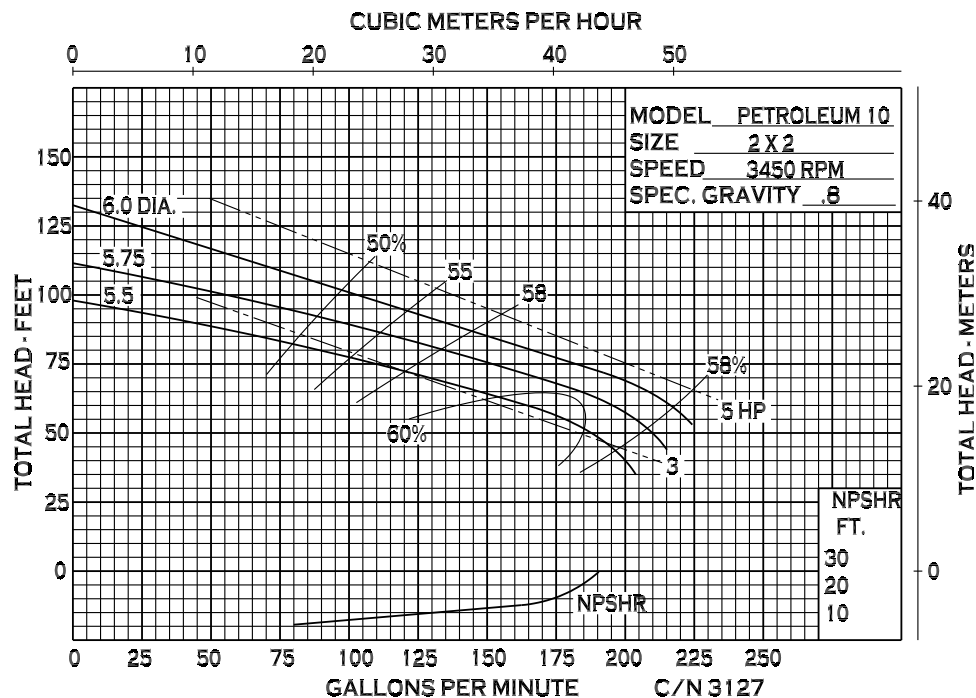
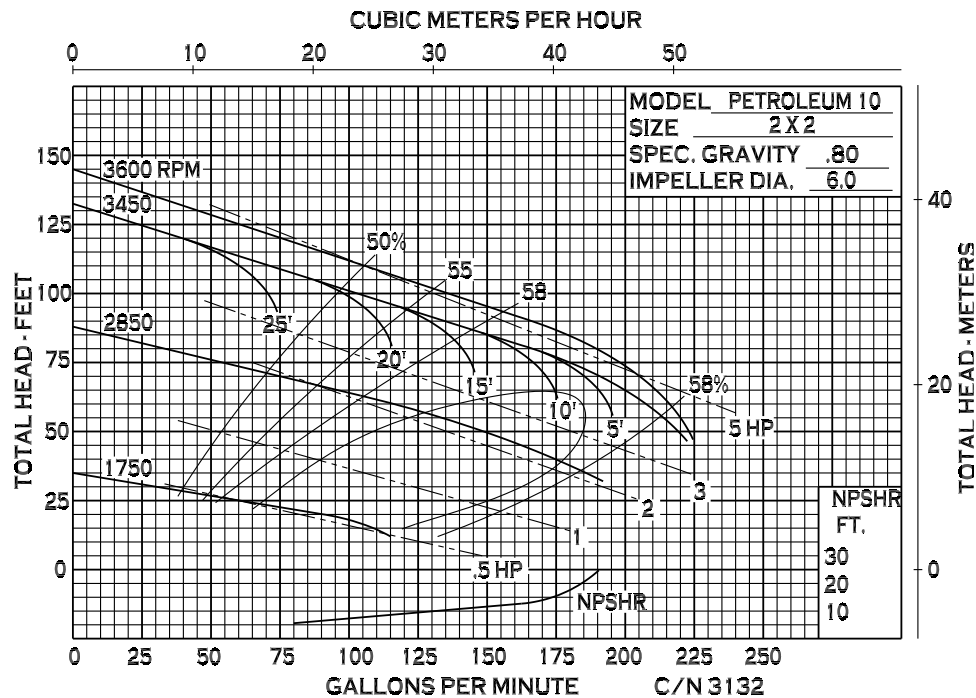
Features

- Gas engine for diesel fuel transfer
- Non-spark clamp (on PG models)
- Renewable wear plate
- Stainless steel drive sleeve
- Stainless steel fasteners
- Up to a 25' (8 m) suction lift

Application:

- Agricultural
- Commercial
- Industrial
- OEM

PERFORMANCE CURVES

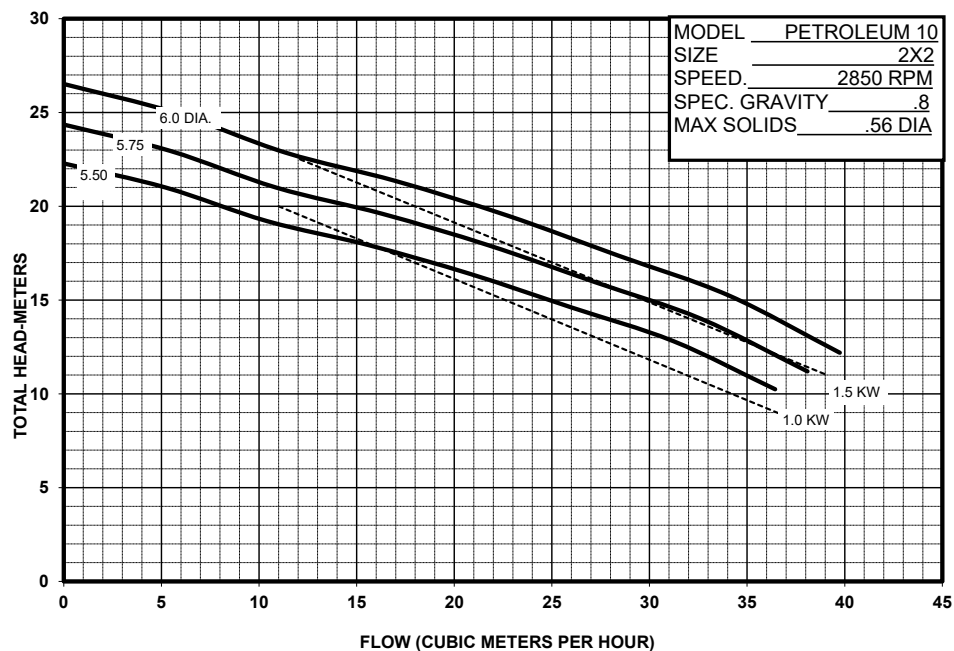




An Ingersoll Rand Business

PETROLEUM 10

PERFORMANCE CURVES



12500 South Pulaski Road
Alsip, IL 60803, USA
Phone (800) 563-8006

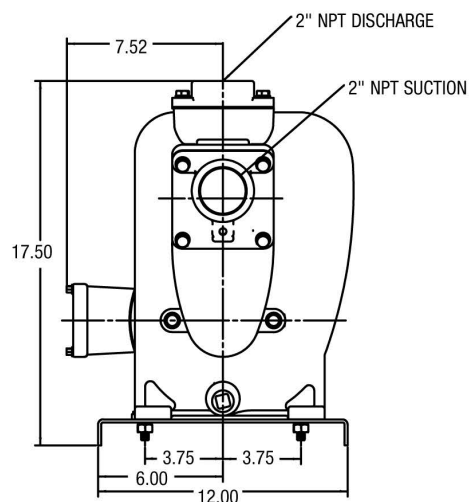
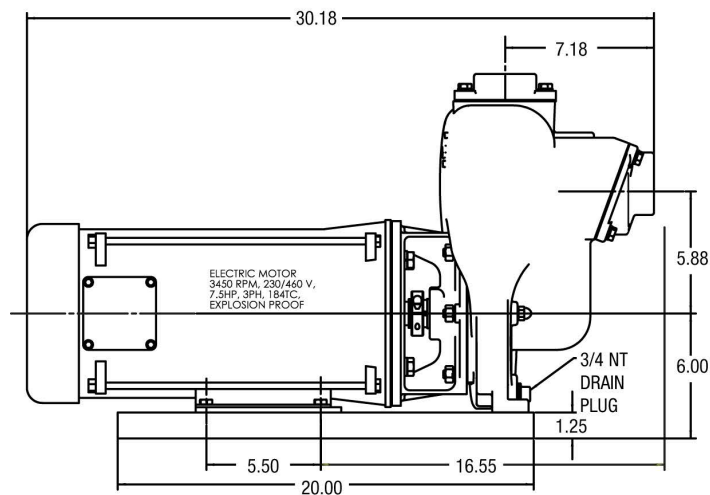


An Ingersoll Rand Business

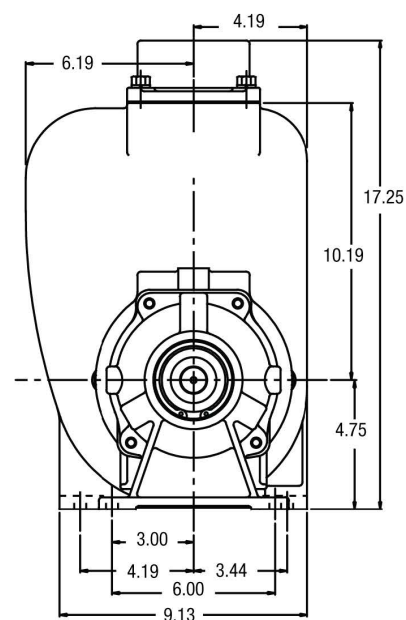
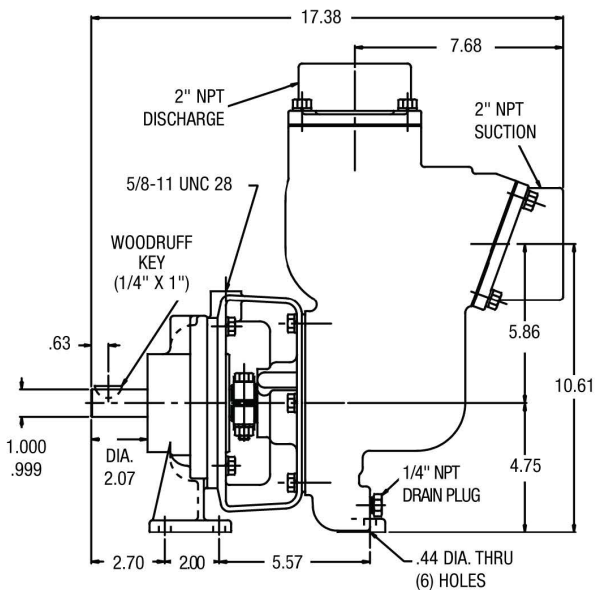
PETROLEUM 10

DIMENSIONS

CLOSE COUPLED - ELECTRIC MOTOR



PEDESTAL-MOUNT



* For complete parts lists and troubleshooting guidance, please refer to the MP Pumps Installation Operation & Maintenance (IOM) Manual.



12500 South Pulaski Road
Alsip, IL 60803, USA
Phone (800) 563-8006